



# NEWS

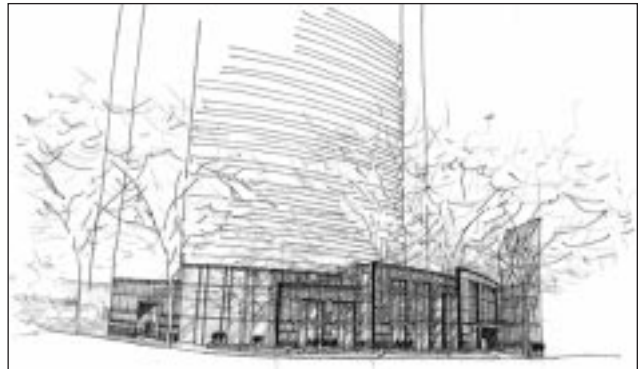
Fall 2001

Vol. IX, No. 3

## In This Issue

<b>People Place</b> .....	<b>2</b>
Celebration for Georgetown Metro Connection	
<b>Street Talk</b> .....	<b>3</b>
Studies on Metro Station and Rosslyn Circle	
<b>Retail News</b> .....	<b>4</b>
Hyatt Arlington Celebrates 25th Anniversary	
<b>Rosslyn Jazz Festival</b> .....	<b>5</b>
September 8 Concert Features Duke Ellington School, Marcus Johnson	
<b>Rosslyn Business Improvement District</b> .....	<b>6</b>
A Progress Report on Work-to-date	
<b>Development News</b> .....	<b>7</b>
Community Benefit Package for 1881 Nash Street project	
<b>Rosslyn Events</b> .....	<b>10</b>
County Board Approves Retail Action Plan	
<b>Partnership News</b> .....	<b>10</b>
Thanks to Rosslyn businesses for supporting "Rooms" lectures	
<b>Membership News</b> .....	<b>11</b>
How to Join Rosslyn Renaissance	

## County Approves Luxury Condo by 3-2



The new 27-story luxury condo will include a 17-foot water wall and a 4,400 square foot restaurant/retail space on Fort Myer Drive.

After nine months of deliberations, the Arlington County Board approved, by a 3-2 vote, a 27-story luxury condominium on the site of the Best Western Hotel at 1850 Fort Myer Drive — the first residential project approved under the “C-O Rosslyn” zoning district. The project, known as “Eighteen81”, is being developed by Farr/Curtis/Walton Ltd. of Bethesda, Maryland.

The Eighteen81 project, named for its front door address on North Nash Street, will provide approximately 173 residential condominium units, with floor to ceiling glass, and eight-foot wide balconies and terraces. Units will range in size from 1,800 to 5,500 square feet, and will range in price from \$500,000 to \$5 million.

The Fort Myer Drive frontage will feature a 4,400 square foot restaurant/retail space, with an area for outdoor café seating and doors from the sidewalk, as well as a 700 square foot residential lobby entrance. The retail and lobby will give the appearance of a three-story, 100-foot long façade along Fort Myer Drive.

On the north side of the building, at the intersection of Key Blvd. and North 19th Street, a small triangular section of the building’s massing will meet the sidewalk, and a passageway will be created underneath the building, with a 17 foot-tall water wall/public art feature facing the passageway. It should be an elegant and impressive urban place.

Next to the Holiday Inn will be a three-story clock tower that provides stairway egress from the building’s parking garage.

Finally, an enclosed swimming pool, health club and lounge area for residents will also face Fort Myer Drive, on the third level of the glass facade.



The project will include sweeping views of D.C. and the Potomac River.

*Continued on page 7*

**BOARD OF DIRECTORS**

Brian P. Coulter  
*President*  
David W. Briggs  
*1st Vice President*  
William H. Brakefield  
*2nd Vice President*  
Pat Latour  
*Secretary*  
James D. Cavanaugh  
*Treasurer*

**DIRECTORS**

**Developer/Property Owners**

William H. Brakefield  
*Westfield Realty*  
Brian P. Coulter  
*The JBG Companies*  
Kayhan Hooshmand  
*The Charles E. Smith Companies*  
Kathy Carroll Stouffer  
*TrizecHahn Office Properties*

**Major Business**

Frank Silverio  
*The Boeing Company*  
Pam Galloway-Tabb  
*The Freedom Forum*  
Meade Atkeson  
*Key Bridge Marriott*  
Pat Latour  
*PricewaterhouseCoopers*

**Retail/Small Business**

James Palermo  
*Art Institute of Washington*  
Jean McDonald-Walker  
*Arlington Temple*  
Cherie Meeboer  
*Gold's Gym*  
Lynn Shulsinger  
*Spice of Life*

**Civic Association/Citizen**

Roa Lynn  
Samuel Metters  
Paula Muroff  
Charles A. Pearson, Jr. F.A.I.A.

**Arlington Co. Representatives**

Betts Abel  
*Staff Liason*  
David W. Briggs  
*County Board*  
Pamela Gillen, AIA  
*Planning Commission*  
Tom Kornis  
*Arts Commission*

**COMMITTEE CHAIRS**

**Membership**  
Cherie Meeboer

**Jazz Festival**  
Meade Atkeson  
Pat Latour

**Urban Design Committee**  
Tom Kornis

**Walkways**  
William H. Brakefield  
**Public Art**  
Roa Lynn

**EXECUTIVE DIRECTOR**  
Cecilia Cassidy



**2001 Members**

Rosslyn Renaissance is supported in part by a grant from the Arlington County Government, and by membership dues from community-minded property owners, businesses, and residents. In Fiscal Year 2001, which ended June 30, we raised almost \$65,000 in dues – an all-time high. Thanks to all who joined since July 1, 2000.

(Bold type denotes new members.)

**PROPERTY OWNERS**

**Blackstone Property Mgmt.**  
The Clover Companies  
Donohoe Development Co.  
Equity Office Properties  
The JBG Companies  
**Lincoln Property Company**  
The Charles E. Smith Companies  
**TMW Real Estate Management.**  
TrizecHahn Office Properties  
Virginia Management  
Westfield Realty

**MAJOR BUSINESS**

*Over 100 employees*  
Airlines Reporting Corporation  
American Chemistry Council  
The Boeing Company  
Cassidy & Pinkard  
**The Clark Construction Group**  
The Freedom Forum  
Hyatt Arlington  
KEI/Pearson  
Key Bridge Marriott  
Marriott Residence Inn  
PricewaterhouseCoopers  
**Raytheon Company**

*26-99 employees*

Air Force Association  
**American Association of School Administrators**  
Applied Career Training  
Daniel, Mann, Johnson & Mendenhall  
Eakin-Youngentob Associates, Inc.  
Fletcher, Heald & Hildreth  
**Holland & Knight**  
**IDI Management, Inc.**  
Insignia/ESG  
Park Tower Realty  
Quality Inn Iwo Jima  
RTKL Associates, Inc.  
TRW, Inc.  
The Virginian  
**The Wade Company**  
**Washington Business Journal**

**SMALL BUSINESS**

*11-25 employees*  
American Feed Industry Association  
**The Art Institute of Washington**  
Bush Construction Corporation  
DOD, Real Estate and Facilities Directorate  
Gold's Gym  
Inlingua School of Languages and Translation Services  
**Jones Lang LaSalle**  
Santa Fe Café  
Tivoli Restaurant  
**Trammell Crow Company**  
**Valcourt Building Services**  
Walsh, Colucci, Stackhouse, Emrich  
*1-10 employees*  
AHC, Inc.  
American Red Cross—Arlington Chapter  
Arlington Partnership for Affordable Housing  
Arlington Transportation Partners  
**Buck & Associates**  
CBQ-Networkland, Inc.  
Condo 1, Inc.  
Courtyard by Marriott

**People Place**

**Celebration for Georgetown Shuttle**



**SHUTTLE CELEBRATION AT THE CAR BARN, OVERLOOKING ROSSLYN:** Joining Arlington County Board Chair Jay Fiset (second from left) and Congressman Tom Davis (R-Virginia) (fourth from left) are RR Board members Pam Galloway-Tabb, The Freedom Forum; David Briggs, Holland & Knight; Pat Latour, PricewaterhouseCoopers; Meade Atkeson, Key Bridge Marriott; and Cecilia Cassidy, RR Executive Director, as well as Barbara Favola, member, Arlington County Board and Jim Hamre, Arlington County Dept. of Public Works.

The Georgetown Metro Connection, a shuttle van project that will connect Rosslyn and Georgetown, starts service on September

4. The project is partially underwritten by the Rosslyn business community and Arlington County in cooperation with The Georgetown Partnership

The Arlington community will contribute nearly \$100,000 a year for three years toward the service, which costs about \$2 million annually, and will receive in return an every-ten-

minute bus service back and forth across Key Bridge.

It was hailed as a great step forward for regional transportation cooperation by local elected officials who attended a start-up celebration held July 9 at the Car Barn in Georgetown. D.C. Delegate Eleanor Homes-Norton, Congressman Jim Moran, Congressman Tom Davis, Arlington County Chair Jay Fiset and D.C. City Council members Jack Evans and Linda Cropp all lauded the project as one solution to overcrowded roads in both the District and Virginia.



**METRO CONNECTION:** Checking out the shuttle van route from the Rosslyn Metro to the Dupont Circle and Foggy Bottom stations are: L. to R. Brian Coulter, partner, The JBG Companies and president of Rosslyn Renaissance; Arlington County Board chair Jay Fiset; and David W. Briggs, partner, Holland & Knight, and RR First Vice President.

*Continued on page 10*

# Street Talk

## ttle Van

The party was a great success, with a spectacular backdrop view of Rosslyn and Key Bridge, and Rosslyn Renaissance board members, residents and County staff all in attendance at the festive event.

In conjunction with Arlington County's commitment of \$25,000 for the project, as well as extensive County marketing support, the Key Bridge Marriott took the lead in Rosslyn's corporate community with a pledge of \$20,000 a year for the next three years.



Kyle Samperton

Arlington County Board Chair Jay Fisetto and RR Executive Director Cecilia Cassidy.

Other Rosslyn property owners pledging to support the project:

- Westfield Realty
- Equity Office Properties
- Clover Management
- Marriott Residence Inn
- Rosslyn
- The JBG Companies
- Cassidy & Pinkard
- Park Tower Management
- The Virginian
- Hyatt Arlington
- TrizecHahn Office Properties
- Blackstone Management
- Courtyard by Marriott
- Quality Inn Iwo Jima
- Air Force Association

The Georgetown Metro Connection will serve all Metrobus stops in Georgetown and operates express service between Georgetown and Foggy Bottom-GWU, Rosslyn and Dupont Circle Metro stations. (See *Street Talk* column for route and schedule.)

## Getting Anywhere From Rosslyn

### Georgetown Shuttle Schedule

**Route 1, Wisconsin Avenue Line.** Runs between Georgetown and Foggy Bottom-GWU Metro station via Wisconsin Ave., NW, the Georgetown Waterfront and K Street, NW.

**Route 2, M Street Line.** Runs between Key Bridge Marriott, Rosslyn Metro and Georgetown and Dupont Circle Metro station via Key Bridge, M Street, Pennsylvania Avenue, L Street and New Hampshire Ave., NW.

Buses leave every day, every 10 minutes:  
Mon.-Thurs.: 7 a.m. – midnight  
Friday: 7 a.m. – 2 a.m.  
Saturday: 8 a.m. – 2 a.m.  
Sunday: 8 a.m. – midnight

Fares are inexpensive: 50¢ one way, 25¢ with a Metrorail transfer.

For more information, go to [www.CommuterDirect.com](http://www.CommuterDirect.com) or [www.georgetowndc.com/shuttle.php](http://www.georgetowndc.com/shuttle.php).

### Rosslyn METRO Study

Almost 16,000 people enter the Rosslyn METRO station on a typical weekday. The number of riders throughout the Metrorail system has been growing dramatically, but the Rosslyn station has not been significantly modified since it opened 24 years ago. In addition, new development adds more riders, and changes ways people get to the station.

So, Arlington County and the Washington Metropolitan Area Transit Authority (WMATA) are now studying ways to make the Rosslyn station easier to use.

First, the study will identify people's access patterns — how many walk, ride bikes, and arrive by bus, taxi, or private car — then the distance and direction they walk to get there. The study will also take into account the effect of new buildings on expected numbers of riders over the next 20 years.

To accommodate future riders, improvements could include changes to drop-off and bus-access areas, reconfigured walkways into the station, modifications to the station mezzanine where fare gates are located, and possibly a new station entrance.

This fall, proposed changes will be presented for review at a public meeting, before deci-

sions are made about any modifications. RR will distribute details of the meeting. To make suggestions for improvements, call the Planning Division of the County's Dept. of Public Works at 703/228-3680 or e-mail [phil\\_braum@urscorp.com](mailto:phil_braum@urscorp.com)

### Rosslyn Circle Study

In another study effort, Arlington County has hired the transportation planning consulting firm of BMI, Inc. to study how to make the Rosslyn Circle area safer for the thousands of pedestrians and bicyclists who travel through the green space at the foot of Key Bridge. Some are biking the Custis and Mount Vernon trails. Others are simply walking along North Lynn Street and Fort Myer Drive. Unfortunately, many come into conflict with car traffic around Rosslyn Circle.

The study will identify causes of traffic conflicts and will propose improvements to be reviewed by the public later this year.

Opportunities for public input will be posted in *RR News* and on Arlington County Department of Public Works' [www.co.arlington.va.us/dpw/planning/bike.htm](http://www.co.arlington.va.us/dpw/planning/bike.htm).

For more information, contact project manager Ritch Viola at 703 228-3699 or [rviola@co.arlington.va.us](mailto:rviola@co.arlington.va.us).

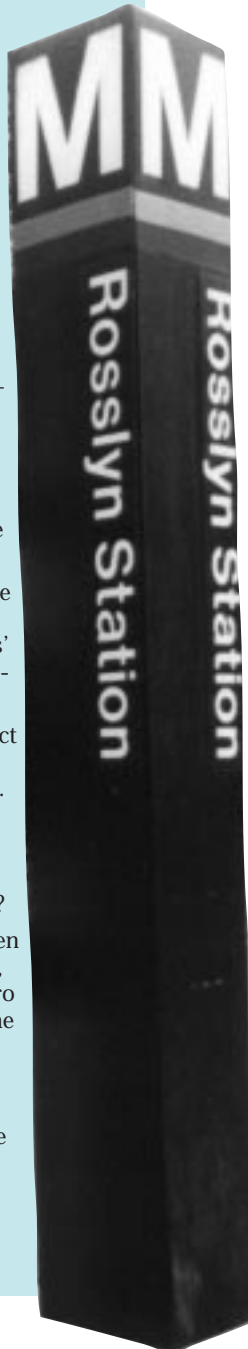
### 5A Bus to Dulles

Looking for the rock-bottom way to get from Arlington to Dulles Airport?

The new 5A Metrobus line runs seven days a week from Rosslyn to Dulles, with one stop, for \$1.10. Take Metro from any point in Arlington to get the Rosslyn station, total fare is \$1.35.

The 5A starts at the L'Enfant Plaza Metro, stops at Rosslyn, then the Herndon-Monroe Park & Ride before stopping at at Dulles.

For more information call 202-637-7000 or check [www.CommuterPage.com](http://www.CommuterPage.com).



# Retail News

## Hyatt Arlington Celebrates 25 Year Anniversary

The Hyatt Arlington is celebrating its 25th anniversary by giving back to the community with "25 Random Acts of Kindness."

The goal of the year-long project is to integrate Hyatt employees and managers into the community through activities such as adopting a homeless family, raising money for charity, donating books to local libraries, sponsoring a canned food drive and helping beautify Rosslyn. Staff will also serve coffee to Arlington Police, ice water to taxi drivers, and read stories to a class at Key Elementary School.

The Hyatt will also hold a reception for its clients and meeting planners who have helped make the last 25 years a success.

"The reason Hyatt Arlington has been so successful over the years is because of its loyal and dedicated customers", states Michael Session, General Manager.

"Many of those customers are local. It seemed so fitting that we should continue to foster relationships built years ago, by giving back to the community that helped us to be the premier hotel in Rosslyn."

In the U.S., Hyatt Worldwide Reservations can be made at 1-800-233-1234 or [www.arlington.hyatt.com](http://www.arlington.hyatt.com).

## Starbucks Opens on Lynn Street

Weekends on Lynn Street will be livelier with the opening of a new Starbucks at 1735 No. Lynn Street. Hours of operation are Monday through Friday, 5:30 a.m. – 8:00 p.m., Saturday and Sunday, 7:00 a.m. – 8:00 p.m. General Manager Matt Blume says his shop will also provide coffee service. Phone is 703/265-7425.



## Olsson's Bookstore Opens This Fall

Olsson's Bookstore is now scheduled to open in September. Owner John Olsson says the store will stock what Rosslyn customers ask for – a true community bookstore. Keep an eye on the RR web page for up-to-date information on the opening.

*Continued on page 9*

Food ▾ Passion ▾ Possibilities  
Contemporary ▾ Sophisticated ▾ Whimsical



Food. Passion. Possibilities.

A sophisticated bistro with trend-setting, whimsical embellishments featuring contemporary Mediterranean cuisine.

**Mezza 9** — Named by *Washingtonian Magazine* as one of the 100 Best Restaurants in the DC area.

**In the Hyatt Arlington**  
1325 Wilson Boulevard • Arlington, VA • 703-525-1234  
Complimentary garage parking • Directly across from the Rosslyn Metro  
Serving Breakfast, Lunch, and Dinner

A black and white advertisement for Santa Fe Cafe. The text is enclosed in a decorative border of repeating slanted lines. The cafe's name is in large, bold, serif letters. Below it, the text describes the cuisine and catering options. A small illustration of a person in a sombrero is on the right side.

**SANTA FE CAFE**

We not only have great Southwestern cuisine, but we feature Rosslyn's best burgers, margaritas and beer selection. Try us for great office catering alternatives including fajita, fiesta salad and taco buffets!

*"Where friends meet for a howling good time!"*

1500 Wilson Blvd.  
Arlington, Va. 22209  
703-276-0361



# Rosslyn Jazz Festival

SATURDAY, SEPTEMBER 8, 2001  
NOON - 6:30PM

**Free Admission**

**Great Food from  
Rosslyn's  
Restaurants**

**Fabulous  
Entertainment**



Sponsored by

**Rosslyn Renaissance**

Co-Sponsored by Arlington County Cultural Affairs Division

Presenting Sponsor: **PRICEWATERHOUSECOOPERS**

**Local Entertainment Sponsors:**

The Boeing Company    Commuterpage.com  
The Freedom Forum / Newseum

**Festival Supporters:**

The Clover Companies, Comcast, Equity Office Properties, The JBG Companies,  
KEI/Pearson, Snell Construction Company, TRW, Inc., Westfield Realty  
The Charles E. Smith Companies, TrizecHahn Office Properties

**Festival Friends:**

Airlines Reporting Corporation; American Feed Industry Association;  
Art Institute of Washington; Betty A. Thompson, Ltd.; Cassidy & Pinkard; Colonial Parking;  
First Virginia Bank; Fletcher, Heald & Hildreth; Gold's Gym; Insignia/ESG, Inc.; Marriott Residence Inn;  
Motel Fifty; Oakwood Worldwide; Park Tower Realty; Quality Inn Iwo Jima; Raytheon Company;  
The Virginian; Walsh, Colucci, Stackhouse, Emrich & Lubeley; Weissberg Corporation

Marcus Johnson



Juanita Williams



U.S. Army Blues Jazz Ensemble

*Also Starring:*

- Arts & Education in Concert
- The New Washingtonians of Duke Ellington School of the Arts



# Business Improvement District

## Rosslyn BID Progress Report

The Rosslyn BID Steering Committee is rolling up their sleeves to move forward the formation of a Business Improvement District (BID) for Rosslyn.

The group has held two community meetings, in May at the Arlington Temple, and in June at the Art Institute of Washington, as well as several steering committee meetings, to draw up a plan for the BID, also known as a Special Taxing District.

"Our goal for a Rosslyn BID," said Bill Brakefield, co-chair of the BID Steering Committee, "is to improve the appearance, convenience, and day-and-night appeal of the commercial district for employees, residents, shoppers and visitors; to enhance property values and increase profitability for our businesses. Services and improvements will supplement, not replace, County activities."

The group must draw up a business plan, common to the creation of any BID, which will be presented to the Arlington County Board sometime later

this year.

The County Board is the body that has the legislative authority from the State of Virginia to approve and create a Special Taxing District. Several sub-committees have been working on various elements of the business plan:

### Services and Improvements.

What is needed to make the District attractive to investors, businesses, residents and visitors?

**Budget.** How much needs to be spent on each of these over a multi-year period to make an important difference?

**Service Area.** What properties need to be included in the designated area?

**Cost Sharing.** What equitable and affordable assessment formula is required? What other sources of funds can be called upon?

**Governance.** How should the District be managed? How should the Board function? How should the district relate to the local government and to Rosslyn Renaissance?



**TALKING ABOUT A ROSSLYN BID.** The topic for the "Rooms with a View" lecture on May 17 was the BID. Speakers were, l. to r., RR President Brian P. Coulter, partner with The JBG Companies; Larry Houstoun, principal with The Atlantic Group; and Rich Bradley, executive director of the Downtown DC BID.



### Rosslyn Farmers Market Now on Thursdays

A Farmers Market is an example of a program run by a BID. Many thanks to Lynn Shulsinger of Spice of Life Café and Bill Brakefield of Westfield Realty for joining forces to open Rosslyn's first Farmers Market in many years.

The market is being held every Thursday through November 15 from 11 a.m. – 3 p.m.

This producer-only market features fresh farm produce brought to you by the growers themselves. Certified organic and traditional farms are represented with a wide assortment of products. The market is located at 1401 Wilson Boulevard, on the corner of Oak Street. For information, contact Lynn Shulsinger at 703-524-2066.

The services under discussion fall into four general categories:

- Beautification and cleaning.
- Community events.
- Marketing.
- Transportation and parking.

The group is working to coordinate with the County's Smartscape program. The transportation program will likely work with the

Georgetown Metro Connection to help provide the shuttle van service.

Input is sought from the business and retail tenants in Rosslyn's buildings. If you are interested in participating, please call Lisa Story at Westfield Realty at 703/525-1101.

### GENERAL DENTISTRY

DANINE FRESCH GRAY, DDS

SPECIALIZING IN GENTLE DENTAL CARE

ONE OF WASHINGTONIAN'S FAVORITE PICKS!

1800 N. KENT ST.  
ARLINGTON, VA 22209

703-525-5901  
FAX: 525-0121

ROSSLYN EYE ASSOCIATES, PC  
DAVID W WEISS, OD  
METRO CENTER MALL 3  
LASER CONSULTATION  
EYE EXAMS, CONTACTS, GLASSES  
(703) 524-7111



# Development News

## 1881 Nash Street Approved

(Continued from page 1)

The Rosslyn Renaissance Urban Design Committee worked very closely with County staff and the development team on the elements of the Fort Myer Drive frontage. The partnership was recognized for its positive contribution toward the urban design aspects of the project, particularly the manner in which the building meets the street on Fort Myer Drive.

### Tapering and height

During the review of the project, questions were also raised about "C-O Rosslyn" building heights of 300 feet located on the periphery of Rosslyn, and whether that height provides an appropriate transition to the lower density residential areas nearby.

Tapering of the building heights or bulk was not explicitly addressed either in the Rosslyn Station Area Plan Addendum (1992) or in the adoption of the "C-O Rosslyn" Zoning District in 1996.

The elevations of Rosslyn vary about 100 feet from Arlington Ridge Road to North Oak Street. So, the County Board, as part of its approval for the Eighteen81 project, also recommended that the tapering and height issues be revisited, with a staff report due back to the Board in a few months.

### Community Benefit Package

The Eighteen81 project was approved under the C-O Rosslyn Special Zoning District, which was created by the County Board in 1996. The new district can allow additional density up to 10 FAR and height up to 300 feet (the height of the USA TODAY tower), when the County Board finds that the development proposal offers important community benefits identified in the *Rosslyn Plan*.

The Eighteen81 project includes a community benefit package valued by the developer and County staff at \$4,129,000.

Affordable Housing Contribution	\$2,030,000
Nash Street Improvements (west side)	175,000
Nash Street Improvements (east side)	205,000
Undergrounding of Utilities on Nash St.	175,000
Undergrounding of Utilities on Key Blvd.	535,000
Tree Plantings along Lee Highway	30,000
Rehabilitation of Stair to Colonial Terrace	165,000
Water Feature Contribution	239,000
Public Art Program	250,000
Contribution to Rosslyn Fund	250,000
<u>Commuter Assistance Program</u>	<u>75,000</u>
<b>TOTAL</b>	<b>\$4,129,000</b>

### Development Team

David Cooper and William G. Anderson of ACG Architects in McLean, Virginia designed Eighteen81 in conjunction with Mark X. LaPier Studio, Landscape Architects in Alexandria, Virginia.

"Eighteen81 represents the first building of its type in the entire Washington metropolitan area. Housing of this type has been constructed all along the eastern seaboard from New York to Miami, but never before in this area," stated Bob Curtis of Farr/Curtis/Walton, Ltd.

Construction is anticipated to begin in 2002, with occupancy beginning in mid-2004. For information, go to [www.eighteen81.com](http://www.eighteen81.com).



### The View from 1801 North Lynn Street

1801 North Lynn Street, Rosslyn's first new office building in over a decade, was topped out in August by Clark Construction. At 24 stories, the office building stands watch over a stretch of the Potomac River from the Georgetown Reservoir to points south of National Airport. Easily visible from the upper half of the building are the Washington Monument, Jefferson and Lincoln Memorials, the Kennedy Center, the Capitol, the National Cathedral, Georgetown University, as well as the spires of Catholic University. Even FedEx Field is visible on the eastern horizon. Scheduled to be completed and available for occupancy in March 2002, 1801 North Lynn Street sets the bar for the next generation of Rosslyn's renaissance. See for yourself by visiting [www.1801nlynn.com](http://www.1801nlynn.com).

## COMMERCIAL REAL ESTATE

**Timothy A. Reese  
Buck & Associates**

703/528-2288 x 13

Specializing in:

- ✓ Arlington
- ✓ Alexandria
- ✓ Falls Church
- ✓ District of Columbia

[timothyareese@aol.com](mailto:timothyareese@aol.com)

## SALES & LEASING

## Arlington Temple United Methodist Church

1835 North Nash Street, Arlington, VA Above the gas station in Rosslyn  
703/525-6075 [Arltemple@aol.com](mailto:Arltemple@aol.com)

Pastor Jean McDonald Walker All Visitors are Welcome!

### Worship Schedule

**Sunday, 10 AM; Tuesday, 7:30 PM;  
Wednesday, 7:30 – 9:00 AM; Thursday, Noon**

# REAL ESTATE

CONDOMINIUMS - TOWNHOMES - SINGLE FAMILY



**Gar Enders**  
Associate Broker  
**Pardoe Real Estate**  
ERA  
703-587-7020  
GarEnders@aol.com

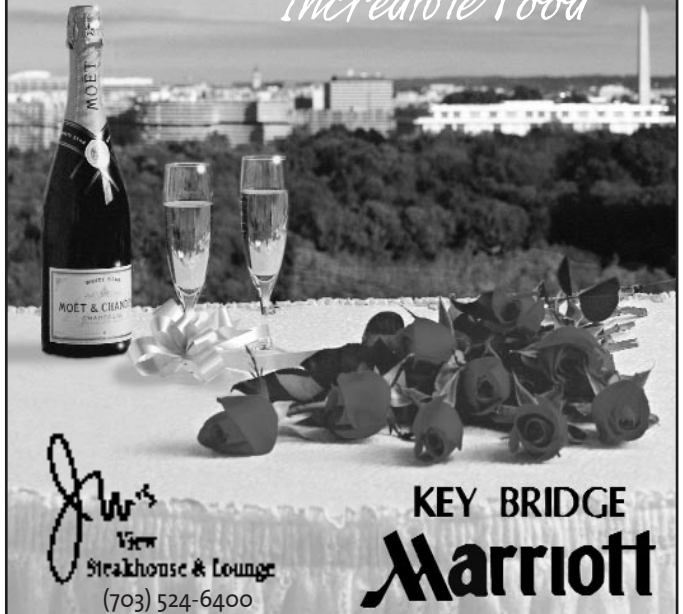
- ◆ Serving North Arlington as a resident-broker for over twenty-five years

THE FIRST STEP TOWARD A BETTER LIFE  
IS TO IMAGINE IT

[www.TopProducer2k.com](http://www.TopProducer2k.com)  
Search for available listings - Free

*Unbelievable View...*

*Incredible Food*



*JW's*  
New  
Steakhouse & Lounge  
(703) 524-6400

KEY BRIDGE  
**Marriott**

Washington's  
Best Kept Secrets



**Iwo Jima**

**New Indoor/Outdoor Pool!**

Minutes to Washington's  
Memorials, Monuments &  
Museums, National Airport,  
Georgetown, Kennedy Center,  
Old Town Alexandria

Restaurant & Meeting Rooms

Free Parking  
Walk to Rosslyn Metro



800-228-5151

1501 Arlington Blvd. (US Rt. 50)  
at Fairfax Dr., Arlington, VA

## Law Offices Betty A. Thompson, Ltd.

1800 North Kent Street  
Suite 1001  
Arlington, Virginia 22209  
Phone: 703-522-8100  
Fax: 703-522-3770

**Specializing in  
Matrimonial and Family Law**

Divorce  
Pre-Marital Agreements  
Property Settlement Agreements  
Custody/Support  
Visitation  
Alimony

[www.rossren.com](http://www.rossren.com)

Many thanks to Marasco Newton Group's City Graphics Business Unit for development of the Rosslyn Renaissance web site.

# Retail and Other News

## County Adopts Retail Action Plan, Creates Retail Council

(Continued from page 4)

### Chipotle's Open on Saturday

Chipotle's hours are: Monday – Friday, 10 a.m. – 4 p.m., Saturday, 10 a.m. – 4 p.m. Closed Sundays. Please be sure to patronize them, especially evenings and Saturdays! Phone is 703/294-6669.

### Sense of Art in Gannett Tower

Now, do you think life in Rosslyn would be perfect if only there were a great print shop to wander in? There is! Sense of Art on the Mall Level of the Gannett Tower at 1100 Wilson Blvd. has an astounding collection of original prints and limited editions for sale. In addition to tasteful custom framing. Open weekdays. Phone is 703/243-1387.

### County Adopts Retail Plan

The Arlington County Board in May adopted a Retail Action Plan that provides formal guidelines for the development of shopping, theaters and business in Arlington's five downtown districts — Rosslyn, Courthouse, Clarendon, Virginia Square, and Ballston. "This plan establishes a framework for future retail expansion," said Board Chair Jay Fisette. "As a planning guide, it will help the County and developers create attractive and desirable retail space in the right places."

In the plan, Rosslyn is slated to become a 24-hour business and cultural district, especially in the four-block area bordered by Wilson Boulevard, Lynn Street, Fort Myer Drive and 19th Street. Recommendations for Rosslyn include marketing the Rosslyn Spectrum theatre and the Newseum (and its successor) as major destinations, encouraging roof-top uses as Rosslyn develops; developing better signage; establishing a parking validation pro-

gram; and encouraging new tourist and cultural attractions to bring tourists from Arlington Cemetery to Rosslyn.

To help implement the plan, RR is participating in the newly-formed Arlington Retail Council. For information, call Arlington County's Retail Specialist Janice Landfair at 703/228-7441.

### Announcements

#### United Way Campaign Kick-Off, September 17

The kick-off event for the Arlington United Way Campaign will be held September 17 at The Freedom Forum in Rosslyn from 8:00 – 9:00 a.m. This year's campaign is being chaired by Robert G. Smith, Arlington Superintendent of Schools. If you are interested in coordinating a campaign in your place-of-work, please call Hank McQueeney, Arlington United Way, 703/522-0606.

#### Rosslyn Health Fair, November 10

Arlington Temple United Methodist Church and Gold's Gym will co-sponsor a Health Fair Saturday, November 10, 9 a.m. – noon at the church at 1835 N. Nash Street. Parking available. Flu shots, cholesterol screening, evaluation of body fat, blood pressure, massage, a nutritionist, and yoga. Call 703/525-6075.



**VOLUNTEERS SOUGHT FOR JAZZ FESTIVAL SEPTEMBER 8.**

Call Jean Minahan, Rosslyn Jazz Festival Manager, at 703/522-6628, if you are interested in helping out with the festival on Saturday, September 8. Volunteer John Cavanaugh helps out in the RR office.



**CCI**  
Cheshil  
Consultants, Inc.



**Microsoft**  
CERTIFIED



Partner  
Help Desk Institute  
Member since 1998



***We Keep You Working Smarter!***

- Computer Support And Services
- Network and Server Support / Solutions
- Computer Training
- Web Based Solutions and Development
- E-Commerce
- Online Database Development

**Call or email today to request your FREE Evaluation...**  
703-569-8763      cvbhmani@cclone.com  
Visit our website at: [www.ccione.com](http://www.ccione.com)



**VBS Valcourt Building Services**

Has been located in Arlington since 1986.  
We are pleased to become new members of  
Rosslyn Renaissance.

# Partnership News

## 2001 "Rooms" Lectures Present a "Space Odyssey"

The theme of the 9th annual "Rooms With A View" lecture series was "2001: A Space Odyssey," with topics covering urban space, performance space and outer space.

Thanks once again to the generosity of Rosslyn's business and government communities, this year's series brought Rosslyn residents and workers to the exciting vista from Top of the Town, the stage of the Rosslyn Spectrum, and the conference center of The Boeing Company.

The topic for the first lecture was the proposed Business Improvement District (BID) for Rosslyn, held at the Top of the Town May 17, and the audience heard about the successes of BIDs in other cities and the possibilities for Rosslyn. (See photo on page 6).

Staff members of the Arlington County Division of Cultural Affairs arranged for and emceed the spectacular entertainment at the Rosslyn

Spectrum on June 6. The internationally renowned acapella group, DaVinci's Notebook, and cabaret singers Judy Simmons and Wendy Lane Bailey of The Cabaret Network gave musical performances that made 'em laugh and made 'em cry. And Mark Rhea, director of the Keegan Theater, along with actress \_\_\_\_\_ performed a scene from "\_\_\_\_\_". Refreshments for both these venues were provided courtesy of Chipotle.

The third lecture by former astronaut Charles D. Walker was arranged by RR Board member Frank Silverio, Director of Administration and Finance for The Boeing Company and also catered by Boeing. Walker's talk "should have been videotaped as a PBS special!" exclaimed one attendee.

Many thanks to all who make it possible.



ROSSLYN'S RESIDENT ASTRONAUT. Charles D. Walker, formerly an astronaut with NASA's Space Shuttle program, presented an illustrated history of the Space Age for the "Rooms" 2001 series. He is now director of marketing for The Boeing Company's Space and Communications business.

### 2001 MEMBER CAMPAIGN

(Continued from page 2)

#### Eighth Day Design, Inc.

EWA Travel  
Federation of State Humanities Councils  
First Virginia Bank  
Globemac Associates  
Danine Fresch Gray  
International Safety Equipment Assn.  
Malena Imports  
Manor Court Apartments  
MBC Precision Imaging  
The McCormick Group  
**Miracles**  
Motel Fifty  
Oakwood Arlington  
Rosslyn Eye Associates  
**Sign-A-Rama Inc.**  
Spice of Life Café  
Betty A. Thompson, Ltd.  
Top of the Town Conference & Reception Facility

#### CIVIC/RESIDENT ASSOCIATIONS

Arlington Temple United Methodist Church, The Atrium Condominium, The Belvedere, **Highgate Owners Association**, Prospect House, River Place North, The Wesley

#### INDIVIDUAL MEMBERS

Mary Adams, Scott Ash, Sarah Bekker, John Benton, Paul Berger, **Mary C. Blake**, David Briggs, Todd Canterbury, **Tyiesha Cavalieri**, Walter Cheatham, Valerie Crotty, Stanley Deutsch, Anthony DiPasquale, Eric Dobson, **Daniel Emberley**, **Gar Enders**, Dorothy Sue Ferrari, Jennifer Ferry, Ernest Fisher, Marian Flynn, Jeanne Fogle, Frank Ganis, Lenore Garcia, Pamela Gillen, Veronica Gillespie, Suzanne Gartner, Brian Gregory, Paul Gruber, Ralph Hammelbacher, Douglas Jerger, W. Landis Jones, Mark and Patricia Kellogg, Sam Kem, Berdj Kenadjian, Lori Kneec, Sophie Koper, Ellen Kosmowski, Diane Lee, James Leonard, Martin Less, Arnold Litman, David Lubs, **Marcia Lutz**, Robert Lyle, Roa Lynn, Helen McCarthy, W. Scott McGeary, Patricia McGrady, Kathryn Montalbano, Paula Muroff, Peyton Palmore, Thomas Parker, Charles Pearson, Betty Petersen, **Frank Pirhalla**, Bobby Pratt, Anthony Priest, Tim Reese, Eleanor Risdon, Carole Robinson, Glory Sabatier, Frank Schmelzer, **Richard Schwartzbard**, Betty Sparkman, **Andrew M. Spell**, Pauline Thompson, **David Treworgy**, C. Michael Upson, Pat & Jaap Van der Vorm, **L. Bruce van Voorst**, Linda Vitello, James Webster, Deborah Wells, **Frances Jean Wells**, Ramonda Wertz, Arlene Wiesner, James Wolf, **Jenny Wu Yeh**, Ellen Mayo Zehl.

**Complex World**

Call Centers CTI Networking  
Microsoft Certified Technical Education Center  
LAN/WAN Wireless  
IP Telephony ACD

**Simple Solution.**  
Your one stop integrator for voice, data & video

**KEI Pearson** 1300 N. 17th Street, Ste. 1300  
Arlington, Virginia 22209  
703-526-7100  
www.keicorp.com

## Join Rosslyn Renaissance

Please complete this application and send to 1911 N. Ft. Myer Dr., Arlington, VA 22209 with your check made payable to "Rosslyn Renaissance".

Name \_\_\_\_\_

Name of Company \_\_\_\_\_

Address \_\_\_\_\_

President/CEO \_\_\_\_\_ No. employees \_\_\_\_\_

Telephone \_\_\_\_\_

Signature \_\_\_\_\_ Title \_\_\_\_\_

### MEMBERSHIP CATEGORIES / DUES

Annual membership dues are listed below. New members are requested to pay a one-time initiation fee equal to one year's annual dues.

#### Major Business

300+ employees \$2,000

100 - 299 employees \$1,000

51 - 100 employees \$ 500

26 - 50 employees \$ 350

#### Retail/Small Business

10 - 25 employees \$ 250

1 - 10 employees \$ 75

Civic/Owner Association \$ 50

Individual \$20 annually/ \$80 for 5 yrs

Dues \$ \_\_\_\_\_ Initiation Fee \$ \_\_\_\_\_

DATE \_\_\_\_\_ \*TOTAL \$ \_\_\_\_\_

\*NOTE: For federal income tax purposes, Rosslyn Renaissance is a 501(c)(6) organization and membership dues are deductible as ordinary and necessary business expenses. Dues may not be deductible as charitable contributions.

1111 N. 19th Street

1117 N. 19th Street

1925 N. Lynn Street

Short Term Office Space  
Available Immediately

Suites from 645 SF - 4,000 SF  
Variable rates beginning at \$16 PSF  
Term through December 31, 2001

Contact  
Daniel Purrington  
703-312-7523

**TrizecHahn**

1250 Connecticut Avenue NW Suite 500  
Washington, DC 20036 202.364.6300

# Stop driving yourself crazy!



Easy commutes  
begin here.™

If your daily commute is wearing you down, stop by The Commuter Store™. You'll find everything you need for easy commuting in Arlington County and Metropolitan Washington, including bus passes, bus tokens, one-day Metro passes, maps, timetables, carpool and bicycling information, and much more. Drop by one of our four stores in Crystal City, Columbia Pike, Rosslyn, and Ballston. We'll get you where you're going, fast! For more information, call (703) 228-RIDE.



Shop us on the web.

If you prefer to shop online, you'll find everything offered at The Commuter Store is also available at our website at [www.CommuterPage.com](http://www.CommuterPage.com). It's also the place to save time and money with CommuterDirect™, tickets and passes delivered directly to your home or office every pass period.



### Commuter Store Locations

#### Crystal City

Located in the Crystal City Underground Mall, directly across from Hamburger Hamlet.

#### Rosslyn

Located in the Rosslyn Center, Mall Level Two, upstairs from the Rosslyn Metrorail Station.

#### Columbia Pike

Located at 2928 Columbia Pike, near the intersection of S. Walter Reed Drive

#### Ballston

Located in the Ballston Common Mall, Level Two, one block from the Ballston Metrorail Station.

### NEED A MAP OF ROSSLYN?

Our handy, pocket-size map lists the phone numbers of all retail establishments and business services in Rosslyn. Call the RR Office at 703/522-6628.



1911 North Fort Myer Drive  
Suite RA-15  
Arlington, Virginia 22209  
[www.rossren.com](http://www.rossren.com)

Rosslyn Renaissance is a public/private partnership established in July 1991 by an alliance of business people, residents, and Arlington County government staff. Its purpose is to promote and market Rosslyn, the "gateway" to Virginia, serve as an information clearinghouse on development, and help implement the vision of the Rosslyn plan. *Rosslyn Renaissance News* is published three times a year. For advertising rates, call 703/522-6628.

e-mail:  
[ccassidy@rossren.com](mailto:ccassidy@rossren.com)

President:  
Brian P. Coulter

Editor: Cecilia Cassidy

Design:  
Palm Tree Studio, Inc.

Fall 2001

PRESRT STD  
US POSTAGE  
**PAID**  
MAIL ADVERTISING  
SERVICES, INC.  
20850



Established in 1982, Tivoli's Northern Italian cuisine has earned it the prestigious *DiRoNA Award* since 1992 as a Distinguished Restaurant of North America, and a three-star Rating by the *Moini Dining Guide* (since 1986). Tivoli's fine wines have received Awards of Excellence from *Wine Spectator*, since 1990. Tivoli Lounge and Gathering Place serving complimentary hors d'oeuvres from 5:00-7:00 pm Mon.-Fri.

#### Tivoli Rosslyn Center

- Gourmet & Pastry
- Imported & Domestic
- Meats and Cheeses
- Wines and Beers
- Fresh Pastry & Specialty
- Cakes Baked Daily

**Pre-Theater Dinner Special \$20.95**  
5:30 - 6:30 pm Monday - Saturday

**(703) 524-8900**  
Call for reservations

Lunch: Monday - Friday, 11:30 am-2:30 pm

Dinner: Monday - Saturday, 5:30 pm-10:00 pm

Located directly above Rosslyn Metro Center 1700 N. Moore Street, Rosslyn, Virginia  
Complimentary Parking in the building after 5:00 pm daily.

