



# Rosslyn Renaissance

# NEWS

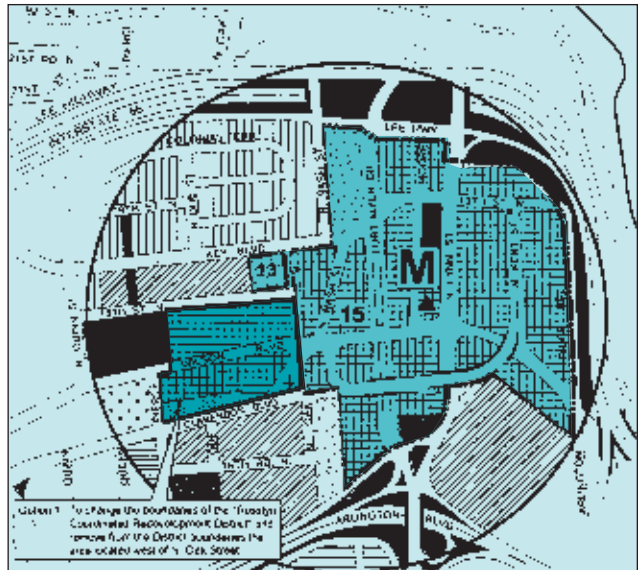
Summer 2002

Vol. X No. 2

## In This Issue

<b>People Place</b> .....	<b>2</b>
PwC Consulting Named 2002 ABBIE Award Winner	
<b>Street Talk</b> .....	<b>3</b>
County Manager Plans Public Preparedness Council	
<b>Summer in Rosslyn</b> .....	<b>4</b>
Artists Market Joins Farmers Market on Third Thursdays	
<b>Rosslyn Jazz Festival</b> .....	<b>5</b>
WPFW-FM to Broadcast Jazz Fest in Gateway Park September 7	
<b>Development News</b> .....	<b>6</b>
WRIT's Luxury Housing Project Goes to County Board	
<b>County News</b> .....	<b>8</b>
Update on Rosslyn BID	
<b>Public Art</b> .....	<b>9</b>
Waterwall A Great Success; Dark Star Park Re-Dedication is August 1	
<b>Business News</b> .....	<b>10</b>
Ai Washington Opens Culinary Arts Program	
<b>Getting Around Rosslyn</b> .....	<b>11</b>
Revised Rosslyn Map and Business Directory Available	
<b>Theatre</b> .....	<b>12</b>
Melba Moore in New Concert Series at Rosslyn Spectrum	
<b>Restaurants</b> .....	<b>13</b>
Residents Encouraged to Patronize Rosslyn Eateries on Weekends	
<b>Partnership News</b> .....	<b>14</b>
Boeing Hosts "Rooms with a View" Lecture on Pentagon Renovation	
<b>Membership</b> .....	<b>15</b>
Thanks to Members. How to Join Rosslyn Renaissance	

## County Board to Review "C-O Rosslyn"



**ROSSLYN'S SPECIAL ZONING.** County staff proposed changes to the zoning district west of Oak Street, between Clarendon and 18th Street.

In July, the Arlington County Board considers changing the boundaries of "C-O Rosslyn" (C-O-R), known as the "Rosslyn Coordinated Redevelopment District".

Specifically, the Board could remove from the zoning district seven properties located west of North Oak Street up to North Pierce Street, in the blocks between Clarendon Boulevard and North 18th Street. Heights would be limited to 180 feet, rather than the 300 feet allowed under C-O-R.

This special zoning district, prescribed in the Rosslyn Station Area Plan Addendum, was created in 1996 as an incentive tool for developers. Under C-O-R, developers can build up to a density of 10 FAR and a height of 300 feet. Since 1996, four site plans have been approved under C-O-R.

However, when the 1881 Nash Street Condominium site plan application was under review in the spring of 2001, members of the County Board voiced concerns about heights of 300 feet at the periphery of Rosslyn, and whether the maximum height permitted provides an appropriate transition to nearby lower density residential areas.

In January, the County Board announced a March public hearing to amend the C-O-R boundary, offering two options:

1. Change boundaries to exclude area west of North Oak St.
2. Amend Note 15 on the GLUP to include a second sentence "This area was designated as the Rosslyn Coordinated Redevelopment District on 5/11/96. All structures located in the area west of North Oak Street shall be restricted to a maximum height of 180 feet."

In March, the County Board deferred making a decision on the proposed amendment for two months to allow for more study by both the Planning Commission and Rosslyn Renaissance (RR). During this time, RR convened meetings with the affected property owners.

*Continued on page 8*

## BOARD OF DIRECTORS

Brian P. Coulter  
*President*  
David W. Briggs  
*1st Vice President*  
William H. Brakefield  
*2nd Vice President*  
Pat Latour  
*Secretary*  
James D. Cavanaugh  
*Treasurer*

## DIRECTORS

### Developer/Property Owners

William H. Brakefield  
*Westfield Realty*  
Brian P. Coulter  
*The JBG Companies*  
Girin Shah  
*The Charles E. Smith Companies*  
Paul Schulman  
*TrizecHahn Office Properties*

### Major Business

Frank Silverio  
*The Boeing Company*  
Pam Galloway-Tabb  
*The Freedom Forum*  
Sharon Lockwood  
*Key Bridge Marriott*  
Pat Latour  
*PricewaterhouseCoopers*

### Retail/Small Business

James Palermo  
*Art Institute of Washington*  
Jean McDonald-Walker  
*Arlington Temple*  
Lynn Shulsinger  
*Spice of Life*

### Civic Association/Citizen

Roa Lynn  
Samuel Metters  
Paula Muroff  
Bruce van Voorst

### Arlington County Representatives

David W. Briggs  
*County Board*  
Pamela Gillen, AIA  
*Planning Commission*  
Tom Korn  
*Arts Commission*  
Janice Landfair  
*Staff Liaison*

## COMMITTEE CHAIRS

### Jazz Festival

Pat Latour  
Sharon Lockwood

### Urban Design Committee

Tom Korn

### Public Art

Roa Lynn

### EXECUTIVE DIRECTOR

Cecilia Cassidy



## 2002 Members

Many thanks to all those members who have joined our partnership since July 1, 2001.

Rosslyn Renaissance is supported in part by a grant from the Arlington County Government, and by membership dues from community-minded property owners, businesses, and residents.

In Fiscal Year 2002, which ended June 30, we raised \$65,305 in dues, our best year ever. If you wish to join, fill out the application on page 15. (**Bold** type denotes new members.)

### PROPERTY OWNERS

Blackstone Property Management  
Charles E. Smith Commercial Realty  
The Clover Companies  
Donohoe Development Company  
Equity Office Properties  
The JBG Companies  
Lincoln Property Company  
**The Miller Companies**  
Trizec Properties, Inc.  
TMW Real Estate Management  
Virginia Management, Inc.  
**Weissberg Corporation**  
Westfield Realty

### MAJOR BUSINESS

*Over 100 employees*  
American Chemistry Council  
The Boeing Company  
The Freedom Forum  
Hyatt Arlington  
KEI Pearson  
Key Bridge Marriott  
PricewaterhouseCoopers  
Raytheon Company

### 26-99 employees

Air Force Association  
Applied Career Training  
Café Asia  
**Central Parking System.**  
DMJM&N, Inc.  
Eakin/Youngentob Associates  
Fletcher, Heald & Hildreth, P.L.C.

### The Holladay Corporation

Holland & Knight LLP  
IDI Management, Inc.  
Insignia/ESG, Inc.  
Marriott Residence Inn  
Park Tower Realty  
Quality Inn Iwo Jima  
TRW Inc.  
The Virginian  
The Wade Company  
Washington Business Journal  
**Washington Real Estate Investment Trust**  
**Xerox Special Information Systems**

### SMALL BUSINESS

*11-25 employees*  
AHC, Inc.  
American Feed Industry Association  
The Art Institute of Washington  
DOD, Real Estate and Facilities Directorate  
Gold's Gym  
Inlingua Schools of Language  
Oakwood Arlington  
**Sands Capital Management**  
Santa Fe Cafe  
**Strategic Fixed Income L.L.C.**  
Tivoli Restaurant  
Valcourt Building Services  
Walsh, Colucci, Stackhouse, Emrich & Lubeley  
*1-10 employees*  
American Red Cross—Arlington Chapter  
Arlington Partnership for Affordable Housing  
Arlington Transportation Partners

# People Place

## PwC and Kastle Systems Win ABBIE



2002 ABBIE AWARD WINNERS: L. to R. Perry Ahmed, General Manager, Sheraton National; Gene Samberg, President, Kastle Systems; Larry M. Bergmann, Vice President, Bergmann's Cleaning; Pat Latour, Administrative Manager, PwC Consulting.

**T**wo Rosslyn companies, PwC Consulting and Kastle Systems, were named winners of the 7th Annual ABBIES

Awards in a ceremony on May 10 sponsored by the Arlington Chamber of Commerce and the Arlington Economic Development Commission.

**Richard Litman**, Chairman of the County's Economic Development Commission, presided over the presentation honoring medium to large businesses for their effective and innovative solutions to business issues and their contributions to the community and region. **Bergmann's Cleaning** and **Sheraton Crystal City** were also named ABBIE award winners. **Gene Samburg**, president, accepted for Kastle Systems.

**Grady Means**, Managing Partner of the Washington Consulting Practice of PwC Consulting and Pat Latour, Manager of PwC's Key School Partnership, accepted the award. Pat Latour also serves on the board of Rosslyn Renaissance.

In accepting the award, Mr. Means noted that PwC sees corporate responsibility as an obligation of the firm to act in ways that benefit the greater society. PwC has set up a Contributions

and Community Involvement (CCI) People Who Care Program, with a focus on education and youth leadership, urban problem solving, and health and human resources. PwC's Rosslyn office has 50 employees volunteering in the Youth Education Partnership at Arlington's Key School. The volunteers serve as tutors, lunch buddies or homework club facilitators.

PwC has also been actively involved with Rosslyn Renaissance for the past six years, with Pat Latour serving on the RR Board. More recently, PwC has been a principal underwriter of the Rosslyn Jazz Festival.

## New RR Board Members

Three new members have recently joined the RR Board, as several have moved on to other positions since RR elections in October. Many thanks for their RR service go to **Meade Atkeson**, Resident Manager of Key Bridge Marriott, who moved to Charleston, South Carolina to become a General Manager of another Marriott; **Kayhan Hooshmand**, who has left the Charles E. Smith Companies to pursue other opportunities; **Kathy Stouffer**, who left Trizec Office Properties to become a

Continued on page 11

# Street Talk

## E Awards



Sharon Lockwood, Key Bridge Marriott

full-time mom; and **Cherie Meeboer**, who left Gold's Gym to start her own personal fitness company.

Newly representing Key Bridge Marriott is **Sharon Lockwood**, a 19-year Marriott veteran, who has been named general manager of the 586-room hotel. Most recently, Lockwood served as hotel manager at the Philadelphia Airport Marriott.

Following in Kayhan Hooshmand's footsteps for Charles E. Smith is Property Manager **Girin Shah**, who interned with Smith while he was studying property management at Virginia Tech.

**Paul Schulman**, Regional Vice President, Trizec Properties, returns to the Board for the second time, having served in 1997-98.



Paul Schulman, Trizec Properties

Finally, **Janice Landfair** of the Arlington Economic Development Department succeeds Betts Abel as County staff liaison.

For bios of the RR Board, go to [www.rossren.com](http://www.rossren.com).

## County Plans Public Preparedness Council

*Did you know* that Channel 31 is the Arlington County information station?

*Did you know* that the Arlington County web site, [www.co.arlington.va.us](http://www.co.arlington.va.us), provides information on emergency preparedness?

On September 11, these County-generated media outlets became "virtual newspapers" with up-to-the-minute information on the disaster at the Pentagon. The County also immediately put in place a 24/7 information hotline and mental health hotline. They were invaluable resources – for those residents who knew about them.

Arlington's County Manager **Ron Carlee** and his government staff have earned well-deserved respect and praise, and recognition the world over, for the professionalism of their emergency response on September 11, and the effectiveness of their Emergency Management Plan (which was initially created in 1956, during the Cold War).

But in the spirit of continuous improvement, and to take advantage of the public's willingness and desire to support emergency efforts, the County Manager has appointed a Public Preparedness Planning Group, headed by **Jackie Snelling** of the Arlington Civic Federation, and staffed by **Clare Haley** of the Fire Department.

"We need to enhance communication systems to the public, ensure public awareness of emergency communications procedures and

provide the public with greater understanding on how to prepare for and respond to different emergency scenarios", said Carlee in a statement to the Arlington Civic Federation.

The purpose of the Planning Group – which has a 60-day mandate, ending Labor Day – is to recommend the structure of an on-going public preparedness council. The program must be consistent with FEMA recommendations, achieve new preparedness procedures by the 2002/2003 winter storm season, and identify incremental improvements that can be made continuously.

Members of the Planning Group will include representatives from the Arlington County Disability Commission, Chamber of Commerce, County Council of PTA's, Interfaith Council, Red Cross and United Way. A member of the Rosslyn Renaissance board, **Bruce van Voorst**, will serve as the RR liaison to the emergency preparedness effort underway in the County.

On July 16, **Captain Mark Penn**, Assistant Director of the County's Emergency Preparedness Team, addressed Rosslyn's property managers at their bi-monthly meeting to pass along information on the preparedness effort.

"On 9/11, Arlington demonstrated a world-class response to the Pentagon", said Carlee. "We must sustain this capacity while extending it to the full community".

## Westfield Given Beautification Award



**THANKS FOR THE GREENERY.** William H. Brakefield (left) receives a plaque from Arlington County Board Chair Chris Zimmerman to acknowledge the excellent landscaping surrounding Westfield Realty's buildings. Elizabeth Weihe, Chair of Arlington's Beautification Committee, also presents an award to John Kamara, director of landscaping for Westfield Realty.

# Summer in Rosslyn

## Artists Market Joins Farmers on 3rd Thursdays



RESIDENTS CAN STOCK UP ON PRODUCE. The Rosslyn Farmer's Market is open Thursdays through November.

Last year, Lynn Shulsinger, owner of the Spice of Life Café and Bill Brakefield of Westfield Realty joined forces to open Rosslyn's first Farmers Market in many years. The market is again being held every Thursday through November from 11 a.m. until 3 p.m.

This producer-only market features fresh farm produce brought to you by the growers themselves. Certified organic and traditional farms are represented with a wide assortment of products. The market is located at 1401 Wilson Boulevard, on the corner of Oak Street.

This year, Lynn, who is a member of the Rosslyn Renaissance Board has brought another dimension to the Thursday

Farmer's Market -an Artists Market on the Third Thursday of every month.

The market is open to producer-artists only (not middlemen, resellers or flea market operators), and offers a variety of fine art, photography, jewelry, glassware, ceramics, and other crafts.

Dates for the Artists Market are:  
August 15  
September 19  
October 17  
November 21.

Stop by the patio at 1401 Wilson Boulevard to stock up on fresh produce, gifts and items for the home.

For information, contact Lynn Shulsinger at 703-524-2066.

*Unbelievable View...*

*Incredible Food*

**Key Bridge Marriott**

*Jaws*  
View  
Steakhouse & Lounge  
(703) 524-6400

**SANTA FE CAFE**

We not only have great Southwestern cuisine, but we feature Rosslyn's best burgers, margaritas and beer selection. Try us for great office catering alternatives including fajita, fiesta salad and taco buffets!

*"Where friends meet for a howling good time!"*

1500 Wilson Blvd.  
Arlington, Va. 22209  
703-276-0361

# Rosslyn Jazz Festival

## WPFW-FM 89.3 To Broadcast Jazz Fest September 7

The Rosslyn Jazz Festival is entering into a new media partnership for 2002 — with Washington's premiere jazz station, WPFW-FM 89.3.

Founded in 1977 as part of the Pacifica Radio Network, WPFW's major music programming is jazz. WPFW acts as archivist, educator and entertainer on behalf of this under-served national cultural resource.

With WPFW's participation in the Rosslyn Jazz Festival, Rosslyn Renaissance will have access to nationally recognized talent, radio co-hosts who are local celebrities with jazz lovers, and pre-festival on-air interviews with both sponsors and performers. Most importantly, pending available funding, RR will broadcast the festival live

on WPFW on the day of the festival, September 7, 2002.

This year, a Rosslyn Jazz Festival favorite, vocalist **Juanita Williams** will open the festival in Gateway Park at 1:00 pm. The **U.S. Army Blues Jazz Ensemble** will be the closing act, and perform a tribute commemorating September 11th. Other acts are to be determined.

Last year, RR joined in partnership with the **Arlington County Cultural Affairs Division**, which has infused the festival with creative new energy. The County provides technical and marketing support, as well as advising on and booking talent.

Providing refreshments: **Key Bridge Marriott, Hyatt Arlington, and Spice of Life Café**, among others.

### Funding a live broadcast

A live broadcast by WPFW depends on raising adequate funding, and the business community has been, as usual, generous in its support.

Many thanks go to **PwC Consulting**, which will be the Presenting Sponsor at the \$5,000 level for this year's festival. Local Entertainment Sponsors at the \$2,500 level are **The Boeing Company, The Freedom Forum and Commuterpage.com**.

So far, Festival Sponsors at the \$1,250 level include **The Charles E. Smith Companies, The Clover Companies, The JBG Companies, Trizec Properties, Virginia Management, and Westfield Realty**.

At the \$500 level, **Raytheon** becomes a Festival Supporter.



OPENING ACT: Juanita Williams.

Festival Friends at the \$250 level include Betty A. Thompson, Cassidy & Pinkard, Colonial Parking, Oakwood Worldwide, Park Tower Realty, and Weissberg Corporation. **King Wholesale/Budweiser** will continue to be the beverage sponsor.

*Tivoli*  
RESTAURANT

*Come try our new spring menu, the dessert is on us!*

SUMMER SPECIAL  
FRIDAY AND SATURDAY  
WINES AT 1/2 PRICE

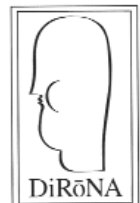
FREE  
DESSERT

*Free Dessert with purchase of Entree*

1700 N. MOORE ST. ROSSLYN, VA (703) 524-8900

*Conveniently located directly above Rosslyn Metro*

FREE PARKING AFTER 5 PM, 1 HOUR DURING LUNCH



# Development News

## WRIT Proposes Luxury Rental Project

Washington Real Estate Investment Trust (WRIT) has consolidated four contiguous properties [1600 Wilson Boulevard, the 7-11 on Wilson, the American Chiropractic Association building on Clarendon Boulevard and an adjoining 14-unit affordable garden apartment building] and has proposed building on the parcel two new luxury apartment buildings with a total of 224 units.

One 15-story building, on the site of the apartments and the park at the corner of Pierce Street, would be a 178-unit project with a central garden area and a 3,800 square foot sculpture pavilion facing Pierce Street. Another eight-story, 46-unit mid-rise building with ground floor retail would be built on the 7-11 site.

Fourteen of the 224 units would be affordable, i.e., available for 30 years to be rented to persons at 50% and 60% of median income. (The original 14 affordable housing units will be replaced by 23 bedrooms in the new project -- five one-bedroom units and nine two-bedrooms.) As such, the project would be designated as a Special Affordable Housing Protection District (SAHPD).

WRIT is requesting bonus density of an additional 32 market rate units in exchange for replacing the 20 original bedrooms with 23. That bonus density policy is under review by the County Board, which held a special joint work session with the Planning and Housing Commissions in June on the general topic of housing policy in the development process.

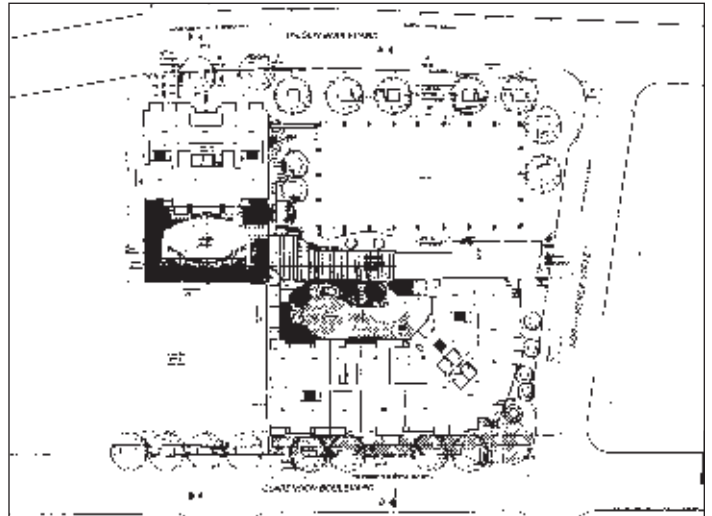
The County Board approved the project in July.

### Holladay Proposes Condos Near G.W. Parkway

The Holladay Corporation has proposed building a 16-story, 67-unit condominium in the parcel of land at 1101 Lee Highway, known as the Schlafman parcel.

The property is sandwiched between the I-66 ramp/Custis Bike Trail and the Key Bridge/George Washington Parkway ramp. Zoned "S3-A" for public use since 1961, the 26,556 square foot site had been zoned "M-2" and in the 1950's was developed for industrial use. In 1963, the property was condemned by the State of Virginia for construction of I-66, but never used, and after many years of court fights was returned to the owner, Mr. Schlafman, in 1998.

The County's Open Space Master Plan for the site encourages coordination with the National Park Service, VDOT and other agencies to develop a plan for the Rosslyn riverfront. Scheduled for consideration by the County Board in July, County staff is not expected to recommend approval of the project.



ARCHITECTURAL RENDERINGS. Faik Tugberk of Architect's Collaborative in Bethesda designed the two apartment buildings and art gallery for the WRIT project.



WRIT PROJECT. 1600 Wilson Boulevard and the 7-11 are included in the assemblage of properties that will include two new apartment buildings.

### COMMERCIAL REAL ESTATE

**Timothy A. Reese  
Buck & Associates**

703/528-2288 x 13

Specializing in:

- ✓ Arlington
- ✓ Alexandria
- ✓ Falls Church
- ✓ District of Columbia

timothyareese@aol.com

**SALES & LEASING**

## Arlington Temple United Methodist Church

1835 North Nash Street, Arlington, VA Above the gas station in Rosslyn  
703/525-6075 [Arltemple@aol.com](mailto:Arltemple@aol.com)

**Pastor Jean McDonald Walker All Visitors are Welcome!**

### Worship Schedule

**Sunday, 10 AM; Tuesday, 7:30 PM;  
Wednesday, 7:30 – 9:00 AM; Thursday, Noon**

# Development News

## JBG Unveils Central Place Proposal



THE JBG COMPANIES' PRESENTATION AT BOEING CONFERENCE ROOM. Brian Coulter (third from left), partner with The JBG Companies and president of Rosslyn Renaissance, describes the Central Place properties to members of the RR Board, Urban Design Committee and County staff.

A Boeing Company conference room that offers a bird's eye view of the Central Place site was the perfect setting for the unveiling of The JBG Companies plan to revitalize the block.

The Central Place block is comprised of all the properties bordered by Wilson Boulevard, North Lynn Street, North 19th Street, and North Moore Street. Those sites include Crandall Mackey Park, McDonald's, Annie's Park, American Association of School Administrators building (AASA), Metro Park, 1730 North Lynn Street, and Tom Sarris Orleans House.

JBG has control of all the properties except McDonald's and

the Orleans House restaurant. The site plan application filed with the County proposes a two-phase luxury residential project for the site. The first phase excludes 1730 North Lynn Street and Orleans House, and proposes incorporating the McDonald's site into the plan.

JBG is working with County staff to move the project forward.

### RR Urban Design Meeting Schedule

The Urban Design Committee of Rosslyn Renaissance reviews all major site plans such as the one submitted for Central Place, as well as minor site plan amendments, signage applica-

tions and other projects at its monthly meetings.

The meetings are open to the public. Residents, workers and those with expertise in planning, architecture and urban design are especially welcome to attend.

The group generally meets the third Wednesday of the month, unless otherwise noted. Meeting dates for the remainder of 2002 are: **July 17, September 18, October 16, November 20 and December 11 (2nd Wednesday).**



RTKL PLAN. Marc Fairbrother, of the architecture firm RTKL, presents the Central Place plan for high-rise residential towers across from the Rosslyn Metro Station.

### Spice of Life Cafe

Soup & Chili Bar • Vegetarian Specialties  
Unique Salads & Sandwiches • Espresso Bar

#### CATERING SERVICES

1401 Wilson Blvd. Arlington VA 22209  
Phone: 703 524 2066 Fax: 703 524 2068

10% off purchase with ad • 10% off purchase with ad

ROSSLYN EYE ASSOCIATES, PC  
DAVID W WEISS, OD  
METRO CENTER MALL 3  
LASER CONSULTATION  
EYE EXAMS, CONTACTS, GLASSES  
(703)524-7111



## County Studies Address Rosslyn Development Issues



**ROSSLYN SECTOR PLAN REVIEW.** Rosslyn Renaissance has suggested that details for the C-O Rosslyn zoning district should be considered as part of the general review of the *Rosslyn Station Area Plan Addendum* scheduled for 2003.

### *Continued from page 1*

RR's position on the County proposal was to recommend that no changes be made to the boundaries of C-O Rosslyn now, but that the issue should be included in the County's broader review of the *Rosslyn Plan*, scheduled for 2003.

"The discussion by our Board included the strong feeling that C-O Rosslyn needs fine-tuning and perhaps a greater degree of specificity regarding characteristics the County deems appropriate in exchange for added density," wrote RR president **Brian Coulter**.

RR noted that, rather than eliminating one area, the appropriate course of action is to address the need for a distinctive skyline, consider topography realistically, provide pedestrian-friendly streetscapes, taper buildings for landscaping and view corridors, and consider building heights below 300 feet at the top of the hill.

The Planning Commission in May proposed a compromise position with a tapering of heights at edges of the district. At its May 18 meeting, County Board Chair **Chris Zimmerman** offered a draft resolution to provide additional guidelines for development of the area. To allow time to develop guidelines, the County Board deferred the issue to July 20 and directed staff to develop the resolution so as to adjust building height limits within C-O-R to create a more desirable skyline. RR and the Planning Commission are expected to comment.

### Public Art Policy and Master Plan for Arlington

Arlington County's Cultural Affairs Division is in a year-long process of creating a Public Art Master Plan. It will establish a vision for public art in the County, identify opportunities for projects, and propose a short-term list of projects to initiate.

The Master Plan, which follows on the County Board's adoption in September 2000 of a Public Art Policy, will focus on art projects funded by three different sources: 1) County capital spending projects; 2) Developer community-benefit contributions; and 3) Neighborhood improvement and conservation projects.

The Master Plan is being led by urban planner **Todd Bressi** and art



**"IN-BETWEEN STUDY."** The County is considering height and density options for the blocks between the Rosslyn and Courthouse business districts. A walking tour was held in February to survey the area.

consultant **Jennifer McGregor**, of New York, and **Brian Harner**, an architect whose Arlington firm, LAB, has been involved with the RR Urban Design Committee.

This fall, there will be a public forum at **Arlington Central Library on Wednesday, October 16 p.m.**, and an open public charrette at the **Ellipse Arts Center on Saturday, November 16**. For information, contact [aadams@co.arlington.va.us](mailto:aadams@co.arlington.va.us).

### Update on Rosslyn Business Improvement District

The Rosslyn BID Steering Committee submitted a plan to the County Board in January for the creation of a BID in Rosslyn and is now in discussions with County staff on implementation. Details to be worked out include boundaries for the district, tax rate, range of services and relationship with Rosslyn Renaissance. It is expected that, with County Board approval, the BID would start operations in the latter part of 2003.

In the meantime, property owners will receive communications from the BID Committee and Rosslyn Renaissance, which sponsors bi-monthly meetings of Rosslyn's property managers.

Until the BID starts up, RR encourages property managers to coordinate with **SMARTSCAPE**, the County program proposed to handle maintenance and beautification on behalf of the BID. To report maintenance issues, and discuss ways to cooperate, call Smartscape team leader **Marty Evans** at 703/228-7750 or 703/209-1853 or [mevans2@co.arlington.va.us](mailto:mevans2@co.arlington.va.us).

### Friends of Arlington Boulevard

More "visioning". In June, the County sponsored a forum on Arlington Boulevard, otherwise known as Route 50, to gain public input into the development of a plan to improve the function, appearance, and safety of Arlington Boulevard in Arlington County. (Route 50 actually extends across the entire United States.) Part of the discussion concerned Meade Street Bridge, connecting Rosslyn to the Iwo Jima Memorial. For more information, contact the County's Public Works Planning staff at 703/228-3681 or [rviola@co.arlington.va.us](mailto:rviola@co.arlington.va.us).

## Dark Star Park Celebration Set for August 1

Dark Star Park (1984) by Nancy Holt, Arlington's first major commissioned public artwork, will be re-dedicated in a ceremony on August 1, 2002. The event starts at 9:00 am.

Located in front of the Park Place building at 1655 N. Fort Myer Drive, the sculpture recently underwent extensive structural renovations, primarily to correct mechanical problems with the water and utility elements of the work.

Dark Star Park was the first artist-designed park in the country to be funded with a matching grant from the National Endowment for the Arts' Art in Public Places program. It is considered a signal project within the public art field for its integration of the art with the design of the adjacent building, and its integration of

properties held by private, County and State interests. Arlington County Cultural Affairs Division, and the developer of Park Place, The Kaempfer Company, provided local funding.

An environmental sculpture, Dark Star Park consists of geometric sculptures situated among pools of water, plantings of winter creeper and willow oaks. The work is carefully composed to offer residents and workers multiple vantage points from which to experience and frame it: through tunnels, around spheres, poles, and shadows, and through reflections in the pools.

The work also serves to mark the date, August 1, that in 1860 William Henry Ross acquired the land that became Rosslyn. Each year on that date, at pre-



**NANCY HOLT'S PARK.** The sculptor of Dark Star Park is expected to attend the re-dedication ceremony.

cisely 9:32 a.m., the actual shadows cast by the poles and spheres synchronize with outlines Holt inscribed on the ground in asphalt, commemorat-

ing Rosslyn's founding history.

For information on the ceremony on August 1, call Jennifer Riddel at 703/228-3331. Or go to [www.arlingtonarts.org](http://www.arlingtonarts.org).

## Liquid Pixels at 1801 N. Lynn Delight the Community

Ned Kahn's windwall at 1801 North Lynn Street, titled "Liquid Pixels", is a hit with the local community – as well as the public art world. People stand watching it, fascinated by the constant motion. And the Public Art Network, a consortium of [500] public art professionals meeting in Nashville in June, named the project one of the 50 best public art projects in the United States for 2002.

The 'windwall' in the new, 24-story building fills six, recessed bays – each one 25 feet wide by 42 feet high — on the building's western and northern facades with approximately 650,000 reflective disks. The disks respond to air currents generated by natural wind, reflecting color from the sky and surrounding structures. They create an ever-changing mosaic of

light sculpted by the wind. The effect is like watching wind race across a pond.

The reflective disks are made of brushed stainless steel, held in place by a stainless steel pin fixed to a plastic-backing panel. The backing panels, approximately one-foot square, each support 100 disks in a rectangular grid, and were assembled in Maine by a team at a non-profit institution which works with people with disabilities.

For the past 15 years, Mr. Kahn has encouraged people to observe natural, kinetic forces manifested through his artwork creations. His recent public art commissions include work with BART at San Francisco International Airport and NOAA's Environmental Lab in Boulder, Colorado.



## Ai Washington Opens Culinary Arts Program

The Art Institute of Washington at 1820 North Fort Myer Drive has opened its two-year program in the culinary arts. The new Culinary Institute, opened in October 2001, includes three production kitchens and one bake kitchen, purchasing and storeroom laboratory, sanitation lab, classrooms, faculty offices and student lounge, and a teaching dining room scheduled to be open to the public by 2003.

The program includes a foundation in sanitation, safety and nutrition studies, as well as a solid business background. Graduates are prepared to seek entry-level positions and food service companies, and with experience may rise to positions such as sous chef, executive chef, private chef and food and beverage director.

For information, call the Art Institute at 703-358-9550.



Jim Palermo, president of Ai Washington (left), with culinary program faculty.

### WJLA-TV, News Ch 8 Move to Twin Towers

WJLA-TV moves to 1000-1100 Wilson Boulevard later this summer, taking nearly 85,000 square feet for its corporate and broadcast operations. Other major tenants moving into the Twin Towers space include the Department of Labor (81,300

square feet); Department of State (57,306), and SRI International (59,351). Other new tenants: Meta Engineers, Millennium Information Systems, Strayer Education, Pal-Tech, Inc., and Contract Services Association of America.

### Marriott at 75

On May 20, 1927, the day Charles Lindbergh began his record-breaking transatlantic flight, J. Willard and Alice Sheets Marriott started a small business – a nine-stool root beer stand in Washington, DC — that has grown to become the world's leading hospitality company. In 1957, the Marriott's opened their first hotel, the Twin Bridges in Arlington. Today, Marriott International is a worldwide hospitality company with 2,600 operating units and 140,000 employees in 65 countries and

territories. Rosslyn has three of them. Congratulations to all Marriott employees during the 75th anniversary year.

### Pines of Sicily Opens

An Italian restaurant by day, a multi-cultural nightclub by night. Pines of Sicily and Chelsea's takes over the old Lighthouse Tavern space with great food by day, live music and dancing at night. Stop by the patio at 1901 North Fort Myer Drive and enjoy it all. Call 703/527-5656.

### NewsFlash on Newseum Space

RR learned as we went to press that Rosslyn-based Museum of the Americas plans to take over the Newseum space. Check out their web page at [www.MuseAmericas.org](http://www.MuseAmericas.org). Details to follow in the next issue of RR News.

### Law Offices Betty A. Thompson, Ltd.

1800 North Kent Street  
Suite 1001  
Arlington, Virginia 22209  
Phone: 703-522-8100  
Fax: 703-522-3770

### Specializing in Matrimonial and Family Law

Divorce  
Pre-Marital Agreements  
Property Settlement Agreements  
Custody/Support  
Visitation  
Alimony

## English Training for your Employees

at GREAT DISCOUNTED rates

- \*Accent Reduction, Conversation-Pronunciation-Listening Workshops
- \*American Business English & Culture
- \*General English (Basic to Advanced), Small Group & Private Classes
- \*TOEFL, GED, GMAT, GRE Preparation Classes
- \*Official TOEIC Testing Center
- \*TEFL/TESL Teaching Certificate

Very convenient schedules:  
Morning, Afternoon, Evening & Saturday Classes.  
Intensive and Semi-Intensive Classes



1920 N. Lynn St. Arlington, VA 22209 - USA  
Phone: (703) 527-8666 X 114 Fax: (703) 527-9866  
E-Mail: [english@inlinguadc.com](mailto:english@inlinguadc.com) Website: [www.inlinguadc.com](http://www.inlinguadc.com)  
Only half a block from the Rosslyn Metro stop (Orange and Blue lines)

# Getting Around Rosslyn

## Rosslyn Map and Business Directory is Updated

RR's popular *Rosslyn Map and Business Directory* has been updated and copies will be available in August.

Last revised in September 1999, this version lists addresses and phone numbers for all of Rosslyn's retail establishments, as well as business and professional services, cultural and educational institutions, residential properties, and real estate firms. The restaurant section carries many new listings and notes which ones are open weekends.

The new map will be placed in all Georgetown Metro Connection vans, to help bring customers across Key Bridge into Rosslyn.

Maps are available for purchase. Quantities of 100 cost \$20, and 1000 cost \$100. To

order, call 703-522-6628, or contact us at [www.rossren.com](http://www.rossren.com).

Please patronize our advertisers

Arlington Temple UMC  
Commuterpage.com  
Gar Enders — Coldwell Banker  
Inlingua School of Languages  
JW's Steakhouse  
Key Bridge Marriott  
KEI Pearson  
Mezza9 — Hyatt Arlington  
Quality Inn Iwo Jima  
Tim Reese — Buck & Associates  
Rosslyn Eye Associates  
Santa Fe Café  
Sir Speedy Printers  
Spice of Life Café  
Betty Thompson Law Offices  
Tivoli Restaurant  
Trizec Properties  
Valcourt Building Services



1111 North 19<sup>th</sup> Street  
1117 North 19<sup>th</sup> Street  
1925 North Lynn Street  
Rosslyn, Virginia

**Short Term Lease Space**  
**Available Immediately - 645 SF - 4,000 SF**

- 2 blocks from Rosslyn Metro
- Reduced rates

**FOR LEASING INFORMATION CONTACT:**

Daniel Purrington  
(703) 312-7523  
[daniel.purrington@trz.com](mailto:daniel.purrington@trz.com)



# So many routes, so little time!



Easy commutes begin here.™

With all these bus routes, it's easy come, easy go in and out of Arlington. Choose from Metrobus routes 3, 4, 5, 15K and 38, Loudoun Express, Fairfax Connector 404, GUTS, Georgetown Connection and Greyhound. There's also Metrorail's Orange and Blue Lines, easy access to HOV lanes on I-66 and I-95 (via 110), and a great line-up of Slugs!

Stop by The Commuter Store in Rosslyn, located just upstairs from the Rosslyn Metrorail Station. It's your one-stop place to shop for all your commuting needs, including bus and rail passes, timetables, Commuter Connections Ridematching and GRH, bike maps and more. For information, call (703) 228-RIDE.



Shop us on the web.

Everything in-store is also available online at [www.CommuterPage.com](http://www.CommuterPage.com). And be sure to save time and money with CommuterDirect.com, tickets and passes delivered directly to your home or office every pass period.



### Commuter Store Locations

**Rosslyn**  
Located in the Rosslyn Center, Mall Level Two, upstairs from the Rosslyn Metrorail Station.  
Mon-Fri 10am-7pm

**Crystal City**  
Located in the Crystal City Underground Mall, directly across from Hamburger Hamlet.  
Mon-Fri 10am-7pm

**Columbia Pike**  
Located at 2928 Columbia Pike, just off South Walter Reed Drive  
Mon-Fri 11:30am-6:30pm  
Sat 10am-3pm

**Ballston**  
Located in the Ballston Common Mall, Level Two, one block from the Ballston Metrorail Station.  
Mon-Fri 10am-7pm, Sat 10am-3pm

## Melba Moore in New Concert Series at Rosslyn Spectrum



MELBA MOORE



RAY BARRETTO

There's an exciting surge of artistic energy in Rosslyn, and it is reflected in the Rosslyn Spectrum Theatre, which will present such legends as Tony Award Winning Broadway star **Melba Moore** and Grammy winning Latin-jazz pioneer **Ray Barretto** during the 2002/2003 season!

Managed by the award-winning **Arlington Cultural Affairs Division**, the 387-seat Rosslyn Spectrum's cultural calendar is designed to showcase its great potential as a music venue. With the support and cooperation of Rosslyn Renaissance, this season features two focused concert series:

### Broadway Cabaret Series

**Melba Moore**  
October 26, 2002  
The riveting, Tony Award-winning star of Broadway's 'Purlie,' 'Hair,' and 'The Wiz'. Beginning with her 1976 hit, 'This is It', Moore also forged a successful career as a pop singer. Now, this seasoned, versatile performer comes to our theatre with her cabaret revue.

**Cabaret Showcase**  
December 14, 2002  
Enjoy an evening of our region's finest cabaret performers, co-sponsored with **The Cabaret Network of Greater DC**. Past guest hosts for this annual event have included NYC Cabaret stars **Tom Andersen** and Broadway leading lady **Sally Mayes** ('Dirty Blonde'). This year's host TBA.

**Liz Calloway**  
March 15, 2003  
Nominated for a Tony Award in the Broadway musical 'Baby', this electrifying performer also originated the role of 'Elen' in *Miss Saigon*, and appeared in 'Grizabella' in *Cats*. Nominated for a Grammy Award for her recording of the song 'Journey to the Past.' Ms. Calloway is sure to set the stage ablaze.

### Latin-Jazz Series

**Ray Barretto**  
September 14, 2002  
The legendary percussionist is indisputably one of the pioneers of Latin-jazz fusion, and an architect of what is now referred to as Salsa. "**Mr. Hard Hands**"

performs with his critically acclaimed Latin-jazz ensemble, **New World Spirit**.

**Chris Washburn**  
December 7, 2002  
A veteran trombonist with **Eddie Palmieri**, Washburn is acclaimed as one of the most adventurous musicians and arrangers on the contemporary Latin-jazz scene. For this program, Washburn and his **S.Y.O.T.O.S.** band perform new works and classics made famous by the immortal **Tito Puente**.

**Orlando Marin**  
January 11, 2003  
One of the great timbalero's of the New York Mambo-era, **Orlando Marin** brings his band's relentlessly swinging style to the DC area for the first time in nearly three decades. Marin is a latin-jazz pioneer of the first order. A must-see evening for any Latin-jazz fan.

**Orquesta Novel with Special Guest Eddie Drennon**  
March 29, 2003  
Be mesmerized by the 'icy-hot' sound of **Charanga**, a Cuban big

band combining throbbing Afro-Cuban percussion with the airy sound of violins and flutes. Featuring one of the great New York-based Charangas of the '70's & 80's, this historic concert reunites the band with original member and former record producer, violinist **Eddie Drennon!**

In addition, there are a number of concert and theatrical presentations by Arlington-based groups such as the **Le Neon** and **A.S.I.A. Theatre** companies, and the **Hesperus Chamber Music Ensemble**.

The re-focusing of the Rosslyn Spectrum as a concert venue is not a sudden decision. In advance of his Kennedy Center performance last season, the great cellist **YO YO MA** gave a special performance at the Rosslyn Spectrum for the families and heroes of the September 11th attack on the Pentagon, and was highly impressed by the venue's acoustics. This only further confirmed the feeling that the Rosslyn Spectrum is an ideal 'intimate' concert space.

### Rosslyn Spectrum for Rent

The space is available for day-time conference rentals. With comfortable seating, a lobby reception area, state of the art audio-visual equipment, the Spectrum makes an ideal location for annual meetings and special presentations. For information, contact **Leslie Pelzer**, Facilities Manager, Arlington Spectrum Cultural Affairs Division (703-228-1843).

To receive a brochure about events, contact Arlington Cultural Affairs Division at 703-228-1850, or email [arts@co.arlington.va.us](mailto:arts@co.arlington.va.us).

[www.arlingtonarts.org](http://www.arlingtonarts.org)

# Restaurant News

## Open Weekends for Residents

Whether you are looking to grab a quick snack, arrange an elegant dinner, or just enjoy a good cup of coffee, Rosslyn has a wide array of options.

### ROOFTOP and FINE DINING

#### JW's Steakhouse (Marriott Rooftop)

1401 Lee Highway  
703-524-6400  
Sun.-Thurs. 5PM-10PM  
Fri., Sat 6PM-11PM  
Fine Dining with incredible view of Washington, DC.  
Reservations required.



#### Mezza 9 (Hyatt Arlington)

1325 Wilson Blvd.  
703-525-1234  
M-F 6AM-11AM  
11:30AM-2PM  
Sat., Sun 7AM-12PM  
5:30PM - 10PM  
"One of the best restaurants in the Washington area" Washingtonian Magazine

#### Tivoli Restaurant

1700 N. Moore St.  
703-524-8900  
M-F 11:30AM-2:30PM and 5:30 PM-10PM  
Sat. 5:30-10PM  
Fine dining.  
Northern Italian cuisine.  
A Rosslyn Institution.

### TWO GREAT BARS

#### Olive Press (Hyatt Arlington)

1325 Wilson Blvd.  
703-525-1234  
Sun.-Thurs. 4PM-12AM  
Fri., Sat. 12PM-12AM  
Sophisticated elegance.

#### Quarterdeck

Across Rte. 50, 3 blocks from Iwo Jima Memorial  
703-525-3881  
Sat.-Sun. 11:30AM-2AM  
Excellent crabs, fun atmosphere.

### CASUAL DINING



#### Café Asia

1550 Wilson Blvd.  
703-741-0870  
Sun. - Thurs. 11AM-11PM Fri., Sat. 11AM-12AM  
Sushi, modern Asian cuisine.

#### Chelsea's/Pines of Sicily\*

1901 N. Ft. Myer Drive  
703/527-5656  
Pines of Sicily Italian Restaurant  
Sun.- Sat. 11 AM - 11 PM  
Chelsea's Nightclub/Live Music  
Sun. - Sat. 11 PM - 2 AM

#### China Garden

1100 Wilson Blvd.  
703-525-5317  
M-F 11:30AM-10PM  
Sat., Sun. 11:30AM-10:30PM  
Cantonese food.

#### Hunan Palace

1815 N. Fort Myer Dr.  
703-528-8188  
Sat.- Sun. 11AM-10PM  
Special Chinese Combinations.



#### Tom Sarris' Orleans House

1213 Wilson Blvd.  
703-524-2929  
M-F 11AM-11PM  
Sat., Sun. 4 PM - 10:30PM  
Famous prime ribs and salad bar.

#### Red Hot and Blue

1600 Wilson Blvd.  
703-276-7427  
Sun.-Thurs. 11AM-10PM  
Fri., Sat. 11AM-11PM  
Barbecue specialties.

#### Ruby Tuesday

1300 Wilson Blvd.  
703-526-1956  
M-Sat. 11AM-11PM  
Sun. 12PM-8PM  
American favorites.



#### Santa Fe Café

1500 Wilson Blvd.  
703-276-0361  
M-F 7AM-9:30PM  
Sat. 5:30PM-10PM  
Southwestern menu with New Mexican ingredients, great margaritas.

### OTHER HOTEL RESTAURANTS

#### Allie's American Grill (Marriott)

1401 Lee Highway  
703-524-6400  
Sun.-Sat. 6:30AM-2 PM  
5PM-10PM  
Family dining.

#### MacArthur's Café (Quality Inn, Iwo Jima)

1501 Arlington Blvd.  
703-528-3570  
M-F 6:30AM-9PM  
Sat., Sun. 7AM-9PM.  
Good food and WWII memorabilia.

### FAST FOOD

#### Burger King

1801 N. Moore St.  
703-527-5696  
M-F 6AM-10PM  
Sat., Sun. 7AM-7PM

#### McDonald's

1823 N. Moore St.  
703-528-1259  
M-F 5:30AM-11:30PM  
Sat., Sun. 5:30AM-9PM

### QUICK FOOD

#### Chipotle's\*

1735 N. Lynn St.  
703-294-6669  
Sat.-Sun. 10:30AM-10PM  
Burritos, other Mexican specialties.

#### Domino's Pizza

1555 Wilson Blvd.  
703-276-1400  
Sun.-Mon. 11AM-12PM  
Fri., Sat. 11AM-2AM

#### Quizno's Classic Subs\*

1735 N. Lynn St.  
703-385-6080  
M-F 9AM-8PM  
Sat., Sun. 11AM-6PM

#### Starbucks (Two locations)

1501 N. 17th St.  
703-812-2100  
M-F 5:30AM-8PM  
Sat. 6:30AM-8PM  
Wed. 7AM-7PM

1735 N. Lynn St.  
703-465-7425  
M-F 5:30AM-8PM  
Sat., Sun 7AM-7PM

### COLONIAL VILLAGE AREA

#### Guajillo's\*

1727 Wilson Blvd.  
703-525-0384  
Sat.-Sun. 11:30AM-10:30PM  
Authentic Mexican cuisine.

#### Il Radicchio

1801 Clarendon Blvd.  
703-276-2627  
M-Sat. 11:30AM-10:30PM Sun. 5PM-10PM  
Gourmet pizzas, and pasta.

#### Pho 75

1721 Wilson Blvd.  
703-525-7355  
Sun. - Sat. 9 AM - 8 PM  
Vietnamese Specialties.

#### Ray's the Steaks\*

1725 Wilson Blvd.  
703-841-7297  
M-F 11:30AM-9:30PM.  
Sat. 4PM-10PM  
New Arlington Steakhouse.

#### Village Bistro

1723 Wilson Blvd.  
703-522-0284  
Sat.-Sun. 11:30AM-2:30 PM, 5PM-10PM. Fri., Sat., 11:30AM-2:30PM, 5PM-11PM  
Italian cuisine.

# Partnership News

## Lectures Highlight Pentagon, Spectrum and Business Journal

RR's 10th Annual "Rooms with a View" lecture series is made possible through generous donations of the speakers' time, meeting space and refreshments. We want to thank this year's participants for another successful year:

On May 8, **Alex Orfinger**, publisher of the Rosslyn-based **Washington Business Journal** spoke at the **Top of the Town** reception and conference facility. Refreshments were courtesy of **Key Bridge Marriott**.

On May 23, **Jim Byers** of the **Arlington County Cultural Affairs** emceed an evening of performances at the Rosslyn Spectrum, arranged by his colleague **Jon Palmer-Claridge**. Actors from **Horizons Women's**

**Theatre** and **LeNeon Theatre**, **Wendy Lane Bailey** of **Cabaret Network** and **Hesperus** performed. Refreshments were courtesy of **Spice of Life Cafe**.

On June 6, **Michael R. Sullivan**, Deputy Program Manager for the Pentagon Renovation Program spoke at the Boeing Conference Center. **The Boeing Company** provided refreshments and over 70 Boeing employees were in the audience of 150.

The lectures feature important issues facing the region or focus on a Rosslyn-based company. Many thanks to all who made it possible, including **Commuterpage.com** which provided advertising sponsorship for the program.



**BOEING SPONSORS PENTAGON RENOVATION LECTURE.** Nearly 150 people filled The Boeing Company's Conference Center to hear Michael Sullivan, Assistant Director of the Pentagon Renovation Program, discuss the Phoenix Project. Pentagon workers in the section of the building hit on September 11, 2001 are expected to be back at their desks in the renovated wing on September 11, 2002.

- Banquet
- Conference Facility

Seminars, banquets, barbecues, breakfast meetings, picnics and other events

- *Creative Menus*
  - *On-site Parking*
  - *Outdoor Pavilion*

Please call **(703) 248-9316**  
or e-mail: [loriatlegion@msn.com](mailto:loriatlegion@msn.com)

Located in The American Legion Building  
3445 Washington Blvd. Arlington, VA 22201



**THANKS TO ALEX ORFINGER.** The publisher of the Washington Business Journal (left) receives a thank you gift from Brian Coulter, RR president. Orfinger's talk on the economy and corporate philanthropy was held at the Top of the Town.



**THANKS TO TOP OF THE TOWN.** John Byrne, owner of Top of the Town, hosted the evening attended by: Stan Karson, president, Radnor-Fort Myer Heights Civic Association; Barbara and Bruce van Voorst, The Weslie; Roa Lynn, The Atrium; and Patricia Darneille, Prospect House.

# Membership News

## Join Rosslyn Renaissance

Please complete this application and send to 1911 N. Ft. Myer Dr., Arlington, VA 22209 with your check made payable to "Rosslyn Renaissance".

Name \_\_\_\_\_

Name of Company \_\_\_\_\_

Address \_\_\_\_\_

President/CEO \_\_\_\_\_ No. employees \_\_\_\_\_

Telephone \_\_\_\_\_

E-mail \_\_\_\_\_

Signature \_\_\_\_\_ Title \_\_\_\_\_

### MEMBERSHIP CATEGORIES / DUES

Annual membership dues are listed below. New members are requested to pay a one-time initiation fee equal to one year's annual dues.

#### Major Business

300+ employees	\$2,000
100 - 299 employees	\$1,000
51 - 100 employees	\$ 500
26 - 50 employees	\$ 350

#### Retail/Small Business

10 - 25 employees	\$ 250
1 - 10 employees	\$ 75

Civic/Owner Association \$ 50

Individual \$20 annually/ \$80 for 5 yrs

Dues \$ \_\_\_\_\_ Initiation Fee \$ \_\_\_\_\_

DATE \_\_\_\_\_ \*TOTAL \$ \_\_\_\_\_

\*NOTE: For federal income tax purposes, Rosslyn Renaissance is a 501(c)(6) organization and membership dues are deductible as ordinary and necessary business expenses. Dues may not be deductible as charitable contributions.



**VOLUNTEERS.** Martin Less and Eileen Coyne run the "Rooms" registration table.

## ARLINGTON REAL ESTATE

**Gar Enders** Associate Broker

Coldwell Banker Real Estate

703-587-7020 GarEnders@aol.com

See ALL available Arlington listings at:

[www.garenders.com](http://www.garenders.com)



EQUAL HOUSING OPPORTUNITY

## 2002 Member Campaign

(Continued from page 2)

### Drs. William & Eden Brown

Buck & Associates  
**Chevy Chase Bank**  
 City Graphics  
 Condo 1, Inc.  
 Courtyard by Marriott  
 Eighth Day Design  
 EWA Travel  
 Federation of State Humanities Councils  
 First Virginia Bank  
 Globemac Associates  
 International Safety Equipment Assn.  
 Malena Imports  
 MBC Precision Imaging  
 The McCormick Group  
**Mid-Atlantic Petroleum – Chevron Station**  
**Mitsubishi Motors**  
 Motel Fifty of Rosslyn  
**Olsson's Books & Records**  
**Pines of Sicily/Chelsea's**  
 Rosslyn Eye Associates  
 Sign-A-Rama  
**Signet Computers**  
**Sir Speedy Copy Center**  
 Spice of Life Café  
 Betty A. Thompson, Ltd.  
**Zipcar, Inc.**

### CIVIC/RESIDENT ASSOCIATIONS

Arlington Temple UMC, The Atrium, The Belvedere, Highgate Owners Assn., **Monument Place Homeowners Assn.**, Prospect House, **Radnor/Ft. Myer Heights Civic Assn.** River Place Owners Assn., The Weslie

### INDIVIDUAL MEMBERS

Mary Adams, Scott Ash, **Helen Bae**, Sarah Bekker, John Benton, Paul Berger, Mary C. Blake, David Briggs, **Julie Burke**, Todd Canterbury, **Joseph Carter**, Susan Cheatham, Walter Cheatham, Stanley Deutsch, Anthony DiPasquale, Eric Dobson, Daniel Emberley, Gar Enders, Jennifer Ferry, Ernest Fisher, Marian Flynn, Jeanne Fogle, Frank Ganis, Leonore Garcia, Suzanne Gartner, Pamela Gillen, Veronica Gillespie, Brian Gregory, Paul Gruber, Chris Hamilton, Ralph Hammelbacher, **Mary Howland**, **Barbara Jensen**, Douglas Jerger, **William Johns**, Landis Jones, Mark Kellogg, Patricia Kellogg, Sam Kem, Berdj Kenadjian, Lori Kneee, Sophie Koper, Ellen Kosmowski, Valerie Kushner, Diane Lee, James Leonard, Martin Less, Arnold Litman, David Lubs, Marcia Lutz, Robert Lyle, Roa Lynn, **Madonna Mann**, Scott McGeary, Patricia McGrady, Samuel Metters, **Steven Monblatt**, Kathryn Montalbano, Paula Muroff, Payton Palmore, Thomas Parker, Betty Petersen, Frank Pirhalla, Bobby Pratt, Anthony Priest, Cameron Quinn, Tim Reese, Eleanor Risdon, Carole Robinson, Glory Sabatier, Frank Schmelzer, **Tina Schneider**, Richard Schwartzbard, Betty Sparkman, Andrew Spell, **Dejan Tasich**, Pauline Thompson, David Treworgy, Carl Michael Upson, Jacob van der Vorm, Bruce van Voorst, Linda Vitello, **Carla Von Bernewitz**, James Webster, Deborah Wells, Ramonda Wertz, Arlene Wiesner, James Wolf, **Andrew Zbikowski**.

## Shop Arlington

Experience the excitement and diversity that Arlington has to offer. From shopping to dining and entertainment, you can find it here.

**The Arlington Retail Council encourages you to support your local retailers.**



Brought to you by the

**Arlington Retail Council**





1911 North Fort Myer Drive  
Suite RA-15  
Arlington, Virginia 22209  
ccassidy@rossren.com  
[www.rossren.com](http://www.rossren.com)

Rosslyn Renaissance is a public/private partnership established in July 1991 by an alliance of business people, residents, and Arlington County government staff. *Rosslyn Renaissance News* is published three times a year.

President:  
Brian P. Coulter  
Editor: Cecilia Cassidy  
Design:  
Palm Tree Studio, Inc.

Summer 2002



**Rosslyn  
Jazz Festival**  
September 7, 2002  
Gateway Park, 1 - 6 PM

PRSR STD  
US POSTAGE  
**PAID**  
MERRIFIELD, VA  
Permit # 6418

Food ▾ Passion ▾ Possibilities  
Contemporary ▾ Sophisticated ▾ Whimsical



**MEZZA**  
Food. Passion. Possibilities.

A sophisticated bistro with trend-setting, whimsical embellishments featuring contemporary Mediterranean cuisine.

Buy 1 dinner entree and get the 2nd of equal or lesser value for free! (With this ad. July/August 2002 only.)

**In the Hyatt Arlington**  
1325 Wilson Boulevard • Arlington, VA • 703-525-1234  
Complimentary garage parking • Directly across from the Rosslyn Metro  
Serving Breakfast, Lunch, Dinner

**THE**  
**Thank Hyatt it's Friday!**



Join us for a "*Rosslyn Rendezvous!*"  
Get a babysitter or get a date,  
it's Friday night! Enjoy our Friday night special:  
3-course Dinner for 2 at Mezza9 and a beautiful room  
for only \$99 (plus tax).  
What better place for a "*Rendezvous?*"



1325 Wilson Boulevard • Arlington, VA 22209 • 703-525-1234  
(Offer good July 1st through September 27th 2002.  
Saturday night price \$75, valid only with a Friday night stay,  
does not include dinner.)